



## ABOUT SUNSHINE COAST COMMUNITY SERVICES SOCIETY

For more than 40 years, Sunshine Coast Community Services Society (SCCSS) has been an integral part of our coastal community, providing connection and assistance through programs to all who call the Sunshine Coast home: pregnant and new moms, parents, children, youth, adults and seniors.

Each year our organization supports over 5,000 community members through 35 programs. Our services are provided all along the Coast, from Port Mellon to Egmont and can be accessed at 13 sites - 4 sites in Gibsons and 9 in Sechelt. Additionally, we provide services through outreach which enables staff to meet participants where they are - in their homes, at a location they choose or out in the community.



## HOW YOU CAN SUPPORT

- Sign up for SCCSS E-news at [sccss.ca](http://sccss.ca)
- Attend a future open house about this project
- Share your support for this project with your neighbours
- Write a letter of support for this project to the District of Sechelt
- Email [dkennedy@sccss.ca](mailto:dkennedy@sccss.ca) about capital campaign donations

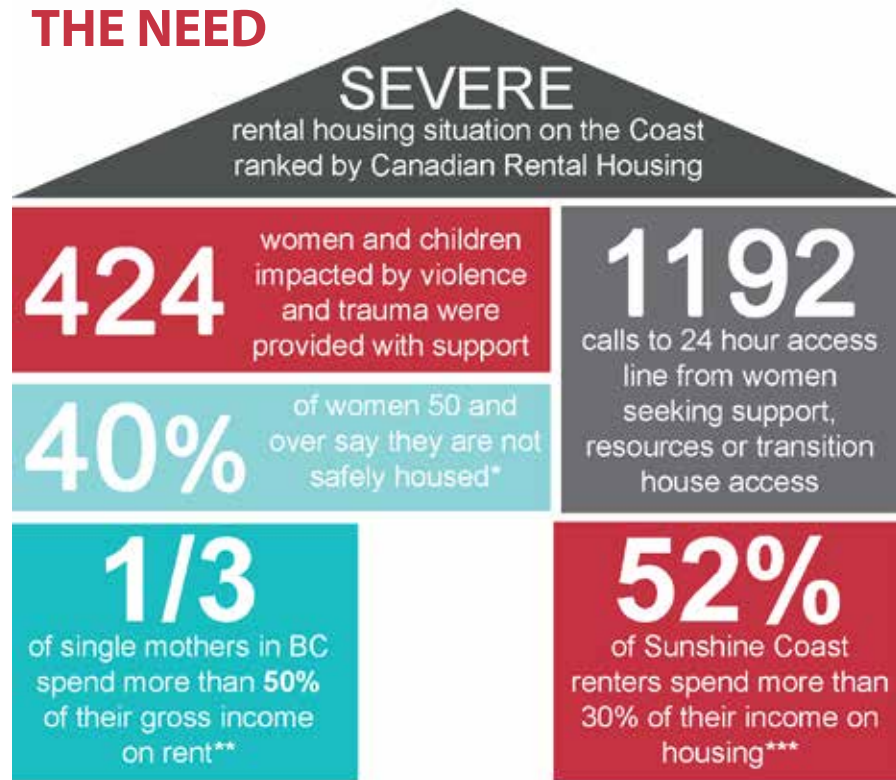
Sunshine Coast Community Services  
PO Box 1069  
5638 Inlet Ave.  
Sechelt BC V0N 3A0  
604-885-5881 | [sccss.ca](http://sccss.ca)

Participate. Donate. Volunteer.

# *Building Housing, Building Community*



## THE NEED



\* Hidden Homelessness Report, SCCSS, 2017  
 \*\* BC Non-Profit Housing Association, 2015 Rental Housing Index  
 \*\*\* 2018 Canadian Rental Housing Index  
 All others: SCCSS 2018-2019 Annual Report

## OUR VISION

*Building an engaged, healthy and thriving Coast through affordable housing, the power of food and Community Services.*

## OUR EXPERIENCE

For over 40 years, SCCSS has been providing women and children safe and supportive short-term housing through our Yew Transition House and Thyme Second Stage Housing. SCCSS also provides housing and support for people living with mental illness at Legacy Housing.



Abuse in relationships is still a hidden issue for many women and housing continues to be one of the biggest barriers to safety, as is ageism for older women on the Sunshine Coast.

*“It is desperate out there. At age 51, I feel stranded, isolated and on the brink of having no shelter. I’ve worked my entire life but qualify for no assistance. It’s frightening”*

Woman surveyed for SCCSS’s Hidden Homelessness Report, 2018

Studies show that safe, affordable and appropriate housing plays a central role in allowing women and families who are marginalized to re-establish their lives. It reduces levels of stress and can change the perspectives of women by providing them the opportunity to empower themselves and therefore, generate a positive, healthy and nurturing environment for children.

Up to  
**35**

Units of affordable housing for women and children.



A redeveloped Community Services space that is purpose built and better able to accommodate our programs while meeting current and emerging community needs.



The addition of a commercial kitchen and food programming space to increase our community’s access to nutritious food and Food Bank services.



Increased safety and security of the neighbourhood through thoughtful design that will increase lighting, improve the pedestrian walkway, increase organized activity and build connections between neighbours.

## THE SITE

Owned by SCCSS, the site is located in Sechelt’s downtown commercial area and is accessible for women who will live there. Schools, grocery stores, the hospital, parks, the library and recreation centres are within walking distance.

